



10 Apr 2023

# Bulletin 1

**23rd US Radio Orienteering Championships  
Michigan - October 2024**

---



(Photo: Waterloo State Recreation Area venue near Grass Lake, MI)

## Welcome!

The [Southern Michigan Orienteering Club \(SMOC\)](#) and Amateur Radio Clubs across southeastern Michigan extend a warm invite to you to attend the **2024 US Radio Orienteering Championships** to be held in the vicinity of **Chelsea, Michigan** in **October, 2024**. Specific dates in Oct 2024 are TBD and will be announced in Bulletin 2.

---

---

## What is Radio Orienteering?



(Photo: Elizabeth Afonkin at the 2022 World ARDF Championships in Bulgaria. IARU)

Also known as “Amateur Radio Direction Finding” (ARDF), [the sport of radio orienteering](#) combines the activities of orienteering (navigation racing) with radio transmitter hunting to present competitors with an exciting physical and mental challenge! Competitors hunt down multiple transmitters hidden in the woods by using a radio receiver and map. The sport has direct application to search & rescue, animal tracking, spectrum management, law enforcement, military and multiple other important activities.

Watch this video for a brief intro to radio orienteering / ARDF:

<https://www.youtube.com/watch?v=I9H8irEMnf4>

## Race Formats

All IARU / ARRL radio orienteering formats will be offered to include **Sprint, Foxoring, 3.5 MHz (80m) Classic, and 144 MHz (2m) Classic.**

---

## Competition Categories

The following competitive age and gender categories will be offered for registration:

Women (W)	Men (M)	Ages
W14	M14	14 and younger
W19	M19	19 and younger
W21	M21	Elite / any age
W35	M40	35/40 and older
W45	M50	45/50 and older
W55	M60	55/60 and older
W65	M70	65/70 and older

## Beginner Instruction

If you or anyone you are bringing with you to the event are new to radio orienteering or need help with a refresher, rest assured there will be people to help beginners at the event and we will have equipment to loan to those who need it.

## National Ranking Event

Championship results will be sanctioned for USA Radio Orienteering national ranking calculation. Since 2024 is not a World ARDF Championship year, the 2024 US Championships will not serve as team trials for selection to Team USA. However, national ranking event results are a secondary consideration for team selection and athletes will likely benefit from the experience and preparation for team trials that comes from competing in this championship. Training camp and practice event results will not be included in national ranking calculations.

---

## Training Camp

Experienced world-class radio orienteers Charles and Nadia Scharlau (NZ0I & KO4ADV) will provide a quality training camp to any who wish to improve their skills the weekend prior to competition week. The training camp is tentatively planned to take place at Yankee Springs State Recreation Area.



## Practice Days

Two practice day events will be offered before official competition begins. The first day of practice will include Sprint and Foxoring format mini-courses. The second day of practice will offer both 80m and 2m Classic mini-courses. Both practice days will be held in superb orienteering venues and provide opportunities to test your skills and equipment.

## Preliminary Program

**Training Camp Day 1 (Sat) - Training** - Yankee Springs State Rec Area; Middleville, MI

**Training Camp Day 2 (Sun) - Training** - Yankee Springs State Rec Area; Middleville, MI

**Day 1 (Mon) - Practice (Classics)** - Eddy Discovery Ctr, Waterloo State Rec Area; Chelsea, MI

**Day 2 (Tues) - Practice (Sprint & Fox-O)** - Maybury State Park; Northville, MI

**Day 3 (Wed) - Sprint** - Hudson Mills Metropark; Dexter, MI

**Cultural outing - Dexter Cider Mill;** Dexter, MI

**Day 4 (Thurs) - 80m Classic** - Bishop Lake, Brighton State Rec Area; Brighton, MI

**W8UM & Radio Observatory presentation** - Univ of Mich; Ann Arbor, MI

**Day 5 - (Fri) - Fox-O** - Park Lyndon & Pinckney State Rec Area; Chelsea, MI

**Cultural outing - Henry Ford Museum & Greenfield Village;** Dearborn, MI

**Day 6 - (Sat) - 2m Classic** - Univ. of Mich. Peach Mountain/Stinchfield Woods; Dexter, MI

**Banquet & Awards Ceremony;** Chelsea, MI

**Day 7 - (Sun) - Workshops / Meetings;** Chelsea, MI

**Service project, checkout, departure**

---

## Cultural and Enrichment Activities

In addition to multiple days of competition, the organizers are also tentatively planning exciting cultural and enrichment activities. Potential outings include the [Henry Ford Museum](#) & [Greenfield Village](#) (ride a Model-T, see [Thomas Edison's lab](#), see [former President's cars](#), see [Rosa Park's bus](#), learn about [American manufacturing history](#)), tour Ford F-150s being made at the [Rouge factory](#), University of Michigan's historic [W8UM club](#), a presentation on University of Michigan's enormous [Peach Mountain Radio Telescope](#) Observatory, and a trip to Michigan's oldest continuously-running [apple cider mill](#)!



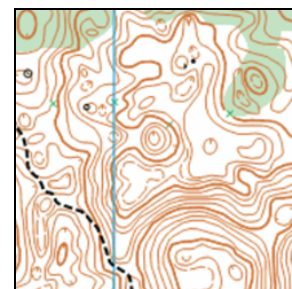
## Workshops and Meetings

The Championship week provides a great opportunity for the radio orienteering community to come together and interact with one another. Workshops and meetings are often included in orienteering and radio orienteering championship weeks. If you have suggestions for workshops or meetings that could make the championship week even better, send a message to the General Inquiry e-mail and we can coordinate.

## Venues

### Yankee Springs State Rec Area - Middleville, MI

[Yankee Springs](#) area includes rugged glacier-formed terrain, bogs, marshes, lakes and streams, 30 miles of hiking trails, 12 miles of mountain bike trails, 10 miles of horseback trails, two public beaches, picnic shelters and two universally accessible fishing piers. All together, nine lakes are located within the park boundaries and provide excellent opportunities for fishing and water sports. The park is home to a modern

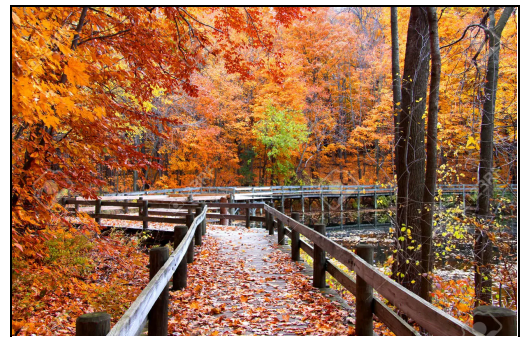


---

campground on the shore of beautiful Gun Lake and rustic camping at Deep Lake. Three special points of interest include Devil's Soup Bowl (a glacially carved kettle formation), Graves Hill Overlook and the Pines. The park is steeped in history as it was once the hunting grounds of the Algonquin Indians and the famous Chieftain, Chief Noonday. The site was established in 1835 and the village was made famous by Yankee Bill Lewis who owned and operated a hotel along the stagecoach run from Kalamazoo to Grand Rapids.

### **Maybury State Park - Northville, MI**

Maybury State Park, a busy day-use park, is home to an oasis of lush, green forest amidst developed land. The park contains 1,000 acres of gently rolling terrain, open meadow and mature forest. The park offers a variety of outdoor recreation opportunities, including an extensive trail system for hiking, biking, horseback riding and cross-country skiing, youth organizational camping, fishing, educational programming and a working farm.



### **Eddy Discovery Center / Waterloo State Rec Area - Chelsea, MI**

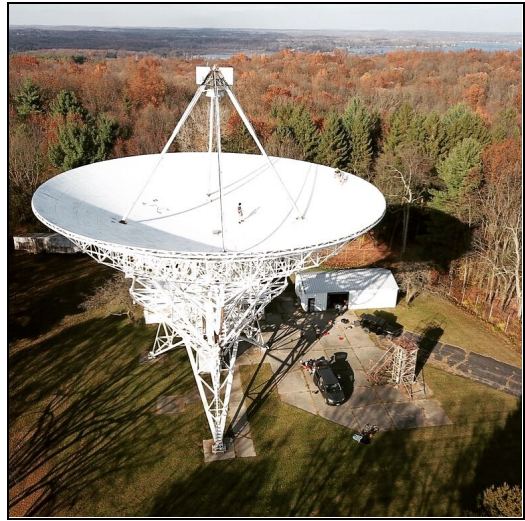
The Eddy Discovery Center, at Waterloo Recreation Area, introduces visitors to the world of geology and the diverse natural habitats that are found within Waterloo's 20,000-plus acres. Waterloo Recreation Area has miles of trails offering hikers of all ages and abilities the chance to explore the diverse geology and habitats from forest wetlands to mature oak-hickory forests. Waterloo is also a great place to view Sandhill Cranes in a self-guided tour of the Haehnle Sanctuary.



---

## **Peach Mountain / Stinchfield Woods - Dexter, MI**

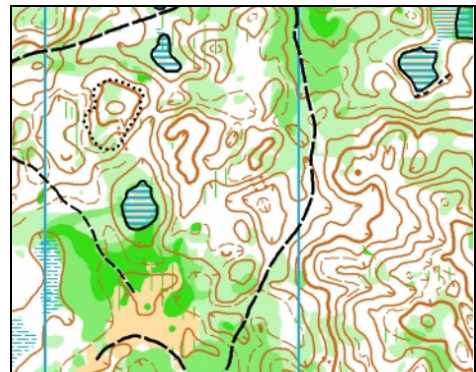
Stinchfield Woods, northwest of Ann Arbor, is a larger area where training in forest and sustainable ecosystem management takes place. The land was acquired in piecemeal fashion beginning in 1925. Now it comprises 777 acres of rolling hills reforested with hardwoods and evergreens. It serves as a field research area for demonstration of forest and sustainable ecosystem management for SEAS faculty and students, as well as the University of Michigan's astronomical observatory site which includes optical



and radio telescope instruments. Stinchfield Woods was deeded to the University in memory of Jacob and Charles Stinchfield of Detroit. The Stinchfield brothers were descendants of the lumbermen that harvested Michigan's giant white pine in the nineteenth century. Stinchfield Woods is largely forested, though there are some old fields and open areas. Forests include 281 acres of native hardwoods (mixed oak-hickory forest) and 372 acres of conifer plantations. This venue was a competition venue during the 2007 Orienteering Team USA team trials.

## **Bishop Lake / Brighton State Recreation Area - Brighton, MI**

Brighton Recreation Area's 4,947 acres of public use land includes a combination of high, irregular ranges of hills, interspersed with a number of attractive lakes. Several miles of trails are available for equestrian, mountain biking and hiking. Oak forest, thick hedgerows and open spaces blend on the uplands while grassy marshes, shrub marshes and dense swamp timber mark the lowlands. This area was a competition venue during the 2018 US Orienteering Championships.



---

## Park Lyndon and Pinckney State Recreation Area - Chelsea, MI

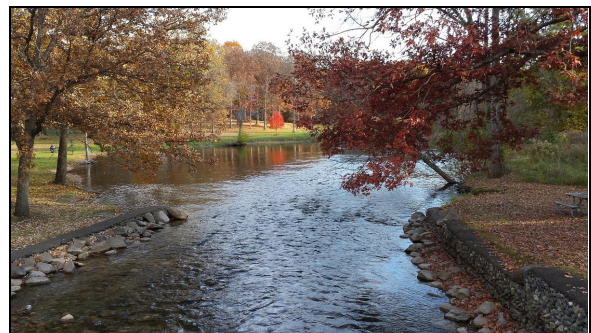
Park Lyndon contains over 500 species of plants in a wide variety of habitats including fens, marshes, bogs, ponds, forest, and prairie. Marked nature trails wind through the steep, glacially sculpted hillsides, connecting to the state's Waterloo-Pinckney Trail for a combined hiking experience of almost 50 miles. Ancient glaciers formed the hilly kettle and kame terrain where oak, hickory, tamarack, poplar, beech, maple, and tulip trees provide cover for ten species of orchids and over twenty-three species of ferns! Much of the upland portion of the trail is atop a long winding esker



ridge created by an ancient stream. Lake Genevieve is a kettle lake formed by glacial activity over 10,000 years ago. Pinckney State Recreation Area includes over 11,000 acres of public use land and is a paradise for backpackers, mountain bikers, swimmers, boaters and kayakers, anglers and other recreation enthusiasts. It is known for its extensive trail system and chain of excellent fishing lakes. Over multi-use trails with remote campsites afford a backcountry experience. The landscape is a terminal moraine area formed during the last glaciation period.

## Hudson Mills Metropark - Dexter, MI

Hudson Mills is a 1,549-acre multi-use Huron-Clinton metropark that includes tamarack swamp, open fields, deciduous forest, vernal and permanent ponds, and most importantly the Huron River. It is a popular destination for canoeing and kayaking; parking areas near the Huron River provide access for canoe launching.



A paved path connects to downtown Dexter. Starting in 1827 the site was utilized for various utilitarian purposes including a saw mill, pulp mill, grist mill, cider mill, and plater mill before it was ultimately repurposed as a park.



---

## **Service Project**

Recognizing the importance of giving back to our communities and being responsible stewards of the natural environments we all love to compete in, the organizers are planning a service project in the championship area and invite all who are willing and able to attend. More details will be provided in future bulletins.

## **Stay Connected**

Social media channel for developments & relevant info:

<https://www.facebook.com/2024USRadioO>

E-mail Event Director & General Inquiries:

[RadioO2024@google.com](mailto:RadioO2024@google.com)

## **Accessible and Religious Accommodations**

The organizers intend to accommodate all individuals who wish to participate in the event regardless of physical or other impairments. We also intend to ensure all religious service scheduling and other religious accommodations are satisfied. Those who wish to arrange for reasonable accommodation please send a message to the General Inquiry e-mail at [RadioO2024@google.com](mailto:RadioO2024@google.com) with "Accommodation Request" in the subject line and submit as early as possible to ensure adequate time for planning and so we can accommodate.

---

# Event Organization

## Personnel

Event Director: Joseph Burkhead (KE8MKR)

Assistant Event Director and Training Camp Director: Charles Scharlau (NZ01)

Operations and Planning Assistant: Thomas Chen

Logistics & Public Relations Director: Rebecca Burkhead

Training Camp Assistant: Nadia Scharlau (KO4ADV)

Map Coordinator: Igor Guskov

Registrar: Southern Michigan Orienteering Club\*

Course Designers: Joseph Burkhead & Charles Scharlau\*

\* We are currently soliciting volunteer help for multiple tasks to include but not limited to:

- Registrar
- Timing system operators
- Website designer
- Transmitter and checkpoint recovery
- Transmitter monitoring
- Hotel check-in
- Competition day check-in
- Emergency medical services
- Start and finish crews
- Course designers
- Bus / van driver
- Sponsor outreach
- General logistical help

Anyone who would like to volunteer, please contact [RadioO2024@google.com](mailto:RadioO2024@google.com)

---

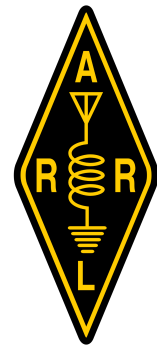
## Host Clubs

[Southern Michigan Orienteering Club \(SMOC\)](#)

[Chelsea Amateur Radio Club \(WD8IEL\)](#)



## Partner Organizations



## Sponsors

To be announced. Organizations wishing to sponsor please contact [RadioO2024@google.com](mailto:RadioO2024@google.com).

## Contact Information

E-mail Address: [RadioO2024@google.com](mailto:RadioO2024@google.com)

Physical Mailing Address: PO Box Pending