

# Blue Hills West

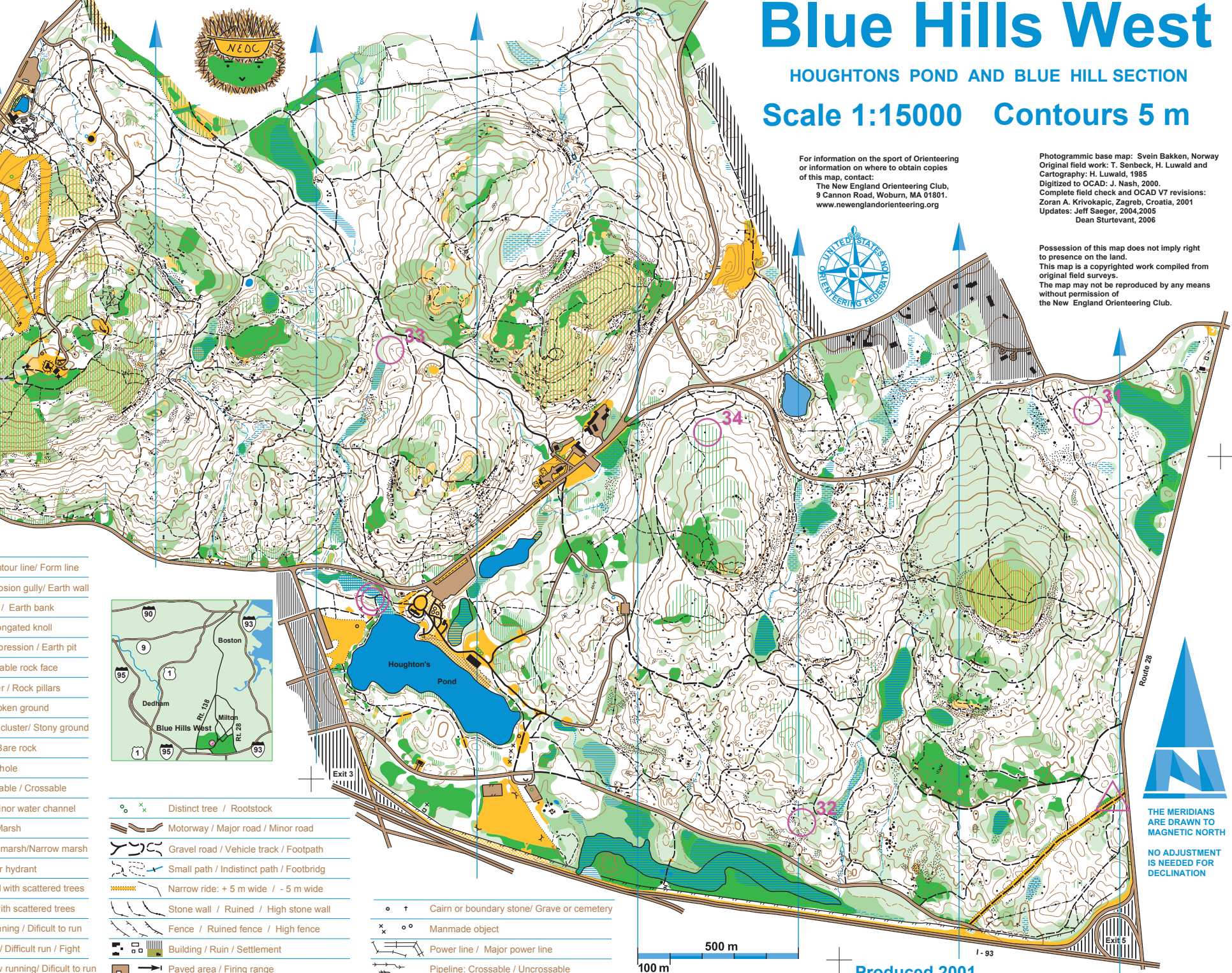
HOUGHTONS POND AND BLUE HILL SECTION

Scale 1:15000 Contours 5 m

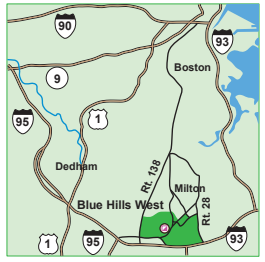
For information on the sport of Orienteering or information on where to obtain copies of this map, contact:  
 The New England Orienteering Club,  
 9 Cannon Road, Woburn, MA 01801.  
[www.newenglandorienteering.org](http://www.newenglandorienteering.org)

Photogrammic base map: Svein Bakken, Norway  
 Original field work: T. Senbeck, H. Luwald and  
 Cartography: H. Luwald, 1985  
 Digitized to OCAD: J. Nash, 2000.  
 Complete field check and OCAD V7 revisions:  
 Zoran A. Krivokapic, Zagreb, Croatia, 2001  
 Updates: Jeff Saeger, 2004, 2005  
 Dean Sturtevant, 2006

Possession of this map does not imply right to presence on the land.  
 This map is a copyrighted work compiled from original field surveys.  
 The map may not be reproduced by any means without permission of the New England Orienteering Club.

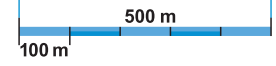


- Contour line/ Form line
- Erosion gully/ Earth wall
- Earth bank
- Angated knoll
- Depression / Earth pit
- Stable rock face
- Rock pillars
- Broken ground
- Stony ground
- Bare rock
- Grass
- Gravel / Crossable
- Minor water channel
- Marsh
- Narrow marsh
- Hydrant
- Scattered trees
- Scattered trees
- Difficult to run
- Difficult run / Fight
- Difficult to run
- Indistinct / Distinct

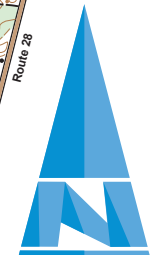


- Distinct tree / Rootstock
- Motorway / Major road / Minor road
- Gravel road / Vehicle track / Footpath
- Small path / Indistinct path / Footbridg
- Narrow ride: + 5 m wide / - 5 m wide
- Stone wall / Ruined / High stone wall
- Fence / Ruined fence / High fence
- Building / Ruin / Settlement
- Paved area / Firing range
- High tower / Hunter's stand / Fodder rack

- Cairn or boundary stone/ Grave or cemetery
- Manmade object
- Power line / Major power line
- Pipeline: Crossable / Uncrossable
- Distinct tree, bush / Fallen tree



Produced 2001



NO ADJUSTMENT IS NEEDED FOR DECLINATION

© Copyright 2001, NEOC